

This tutorial is based on the information found at this link [How to Access Shared Folders on a Network \(with Pictures\) \(wikihow.com\)](#).

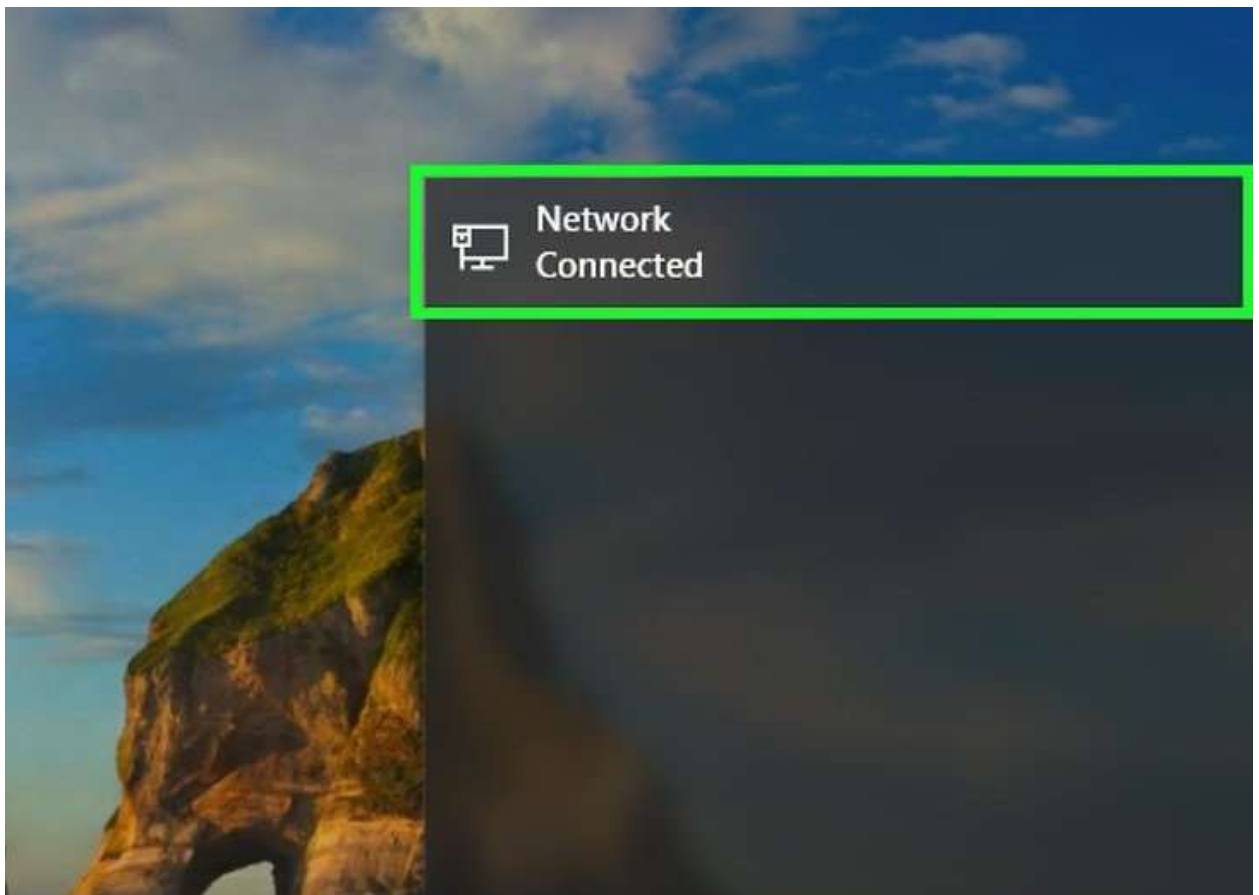
We have slightly modified this content so that it makes a bit more sense with regards to our products specifically.

---

# 1

**Make sure you're on the correct network.** In order to open a shared folder from a different computer, you must be using the same Internet network as the computer which is sharing the file.

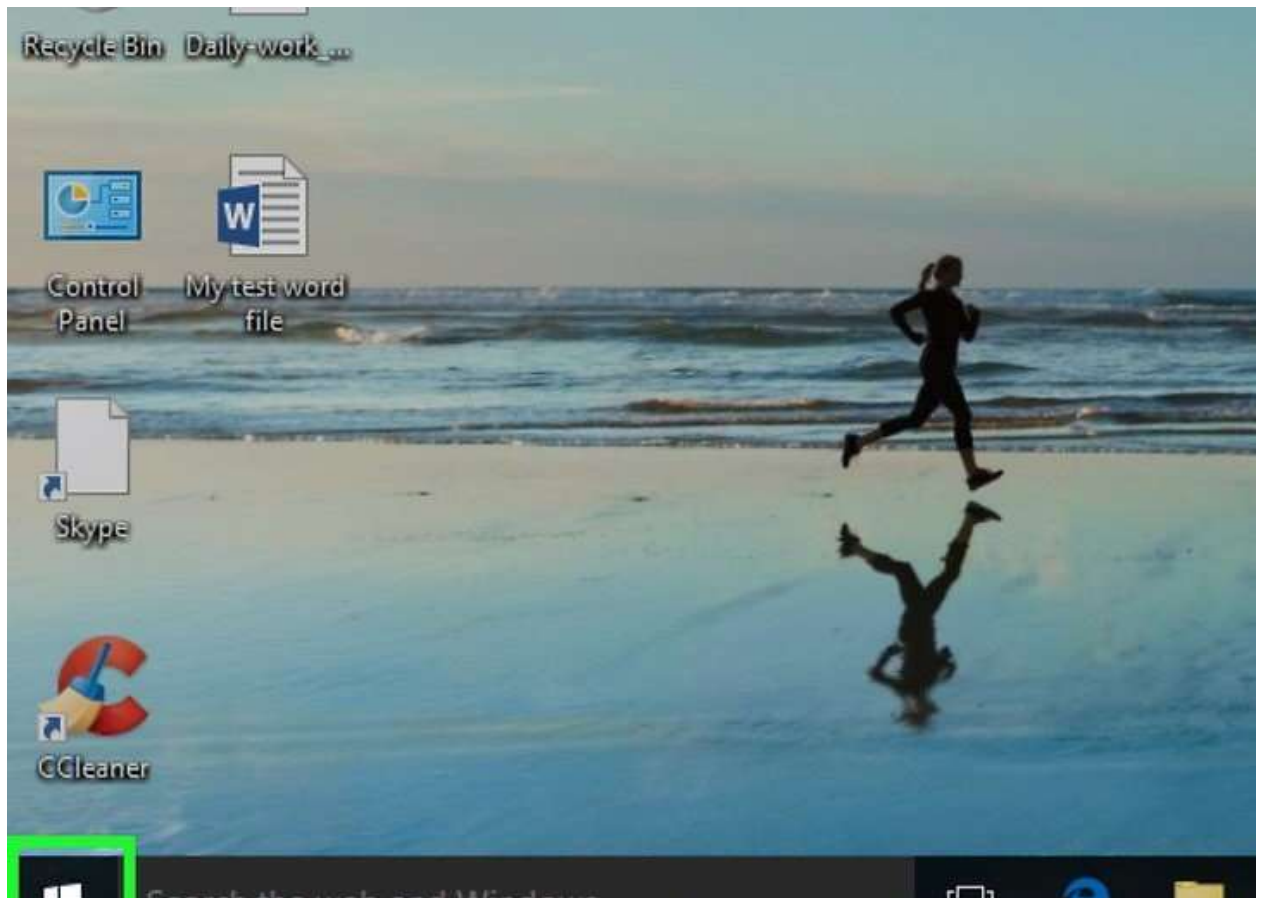
- Skip this step if your PC is wired to the computer which is sharing the folder(s) via an Ethernet cable.



# 2

## Open Start

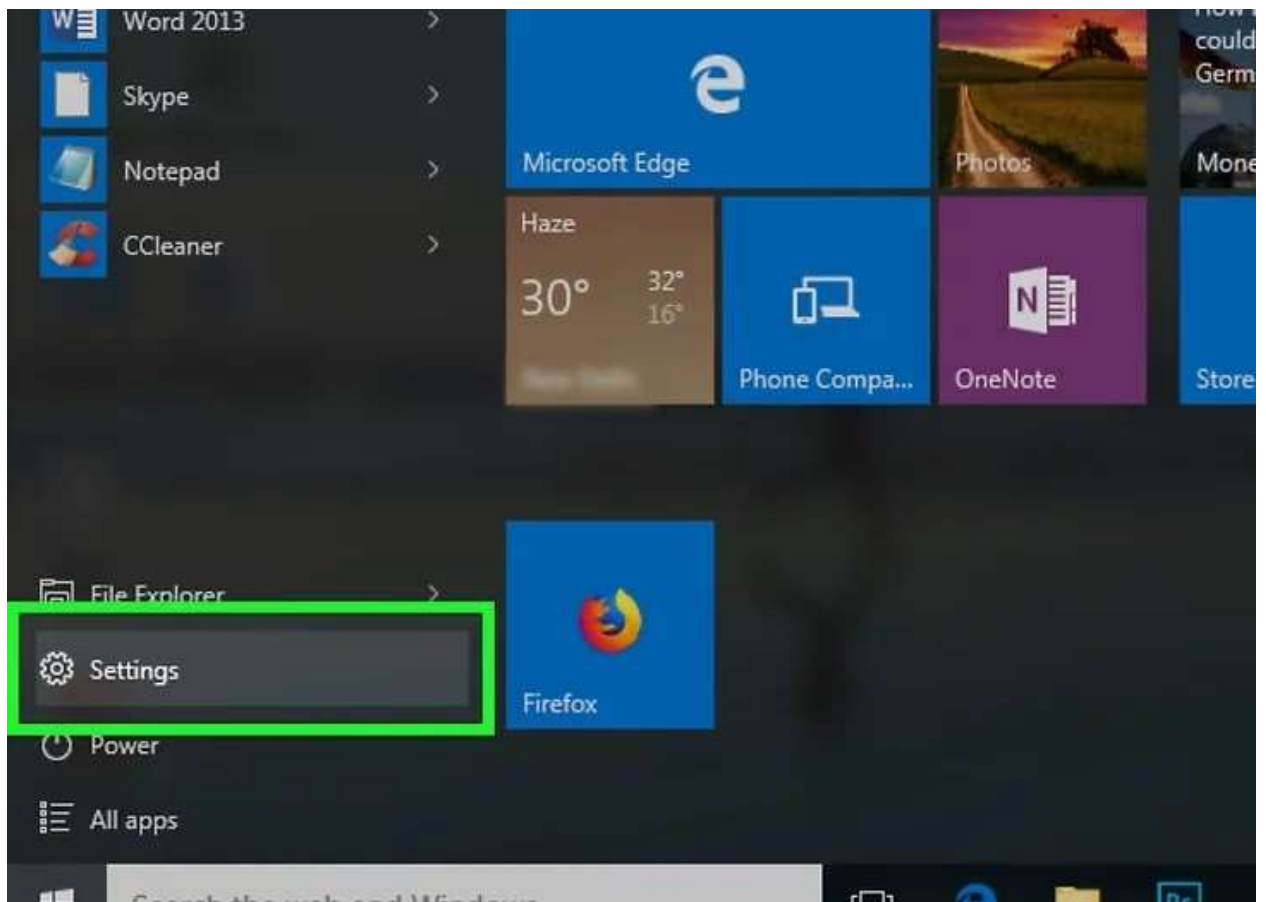
. Click the Windows logo in the bottom-left corner of the screen. The Start menu will pop up.



# 3

## Open Settings

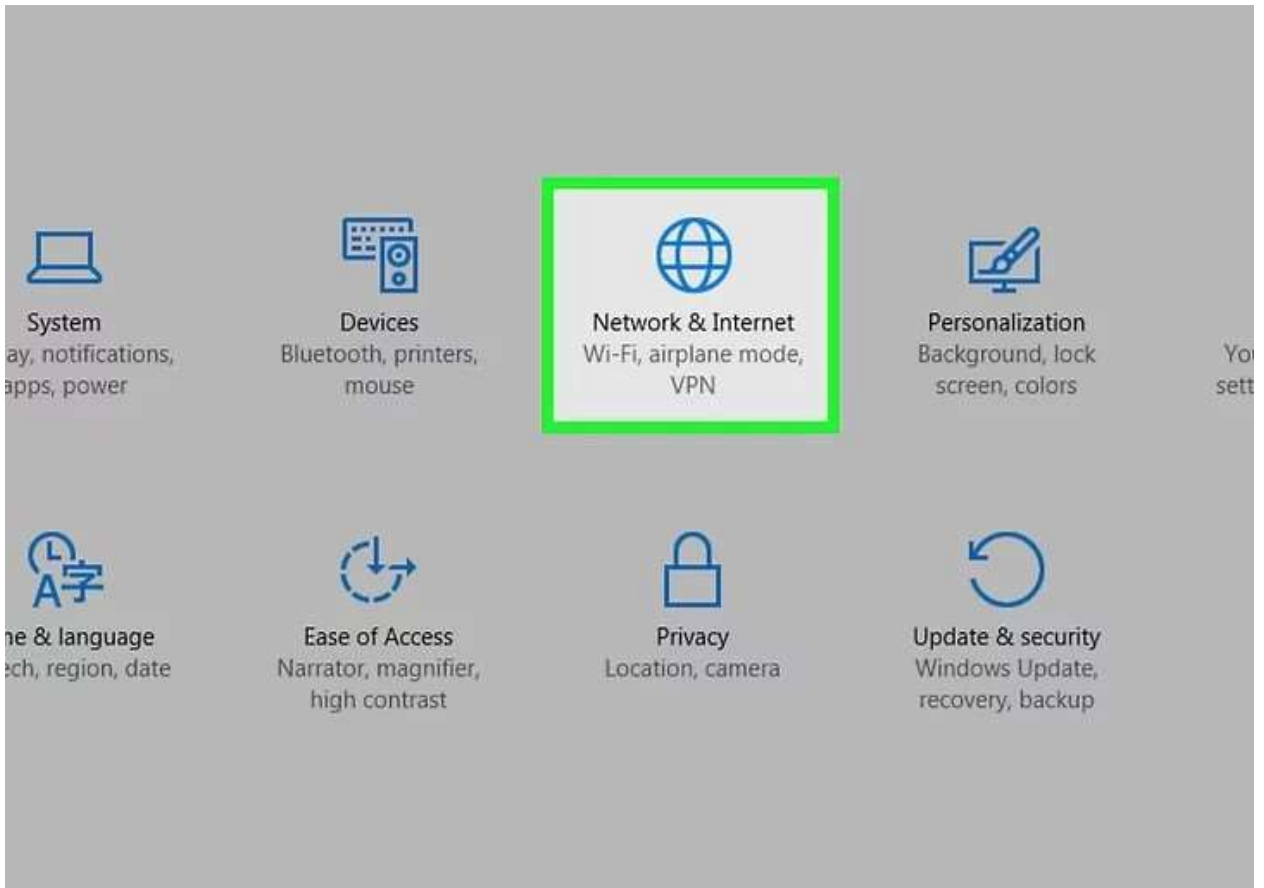
. Click the Settings gear in the lower-left corner of the Start menu. This will open the Settings window.



# 4

Click

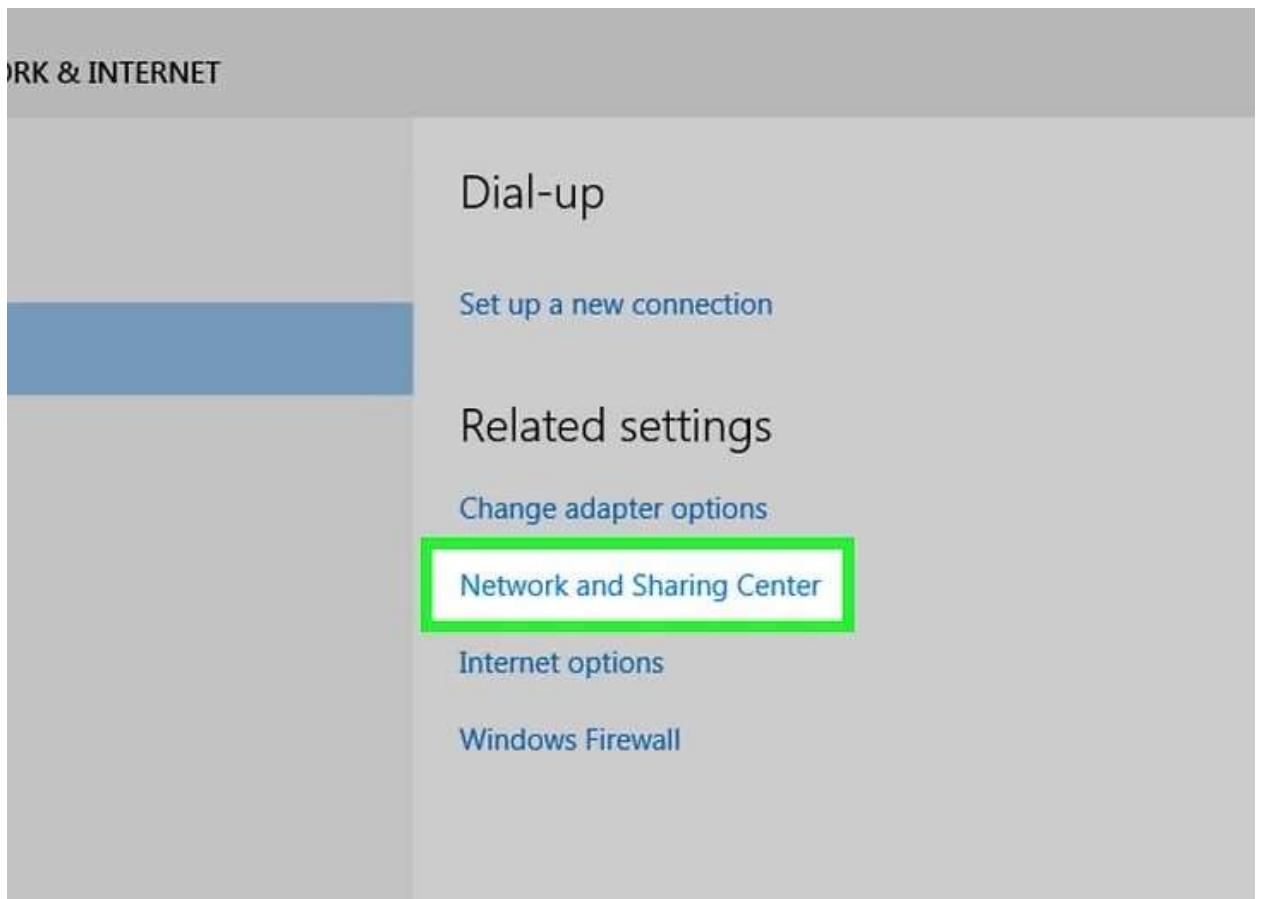
**Network & Internet.** This is in the middle of the Settings window.



# 5

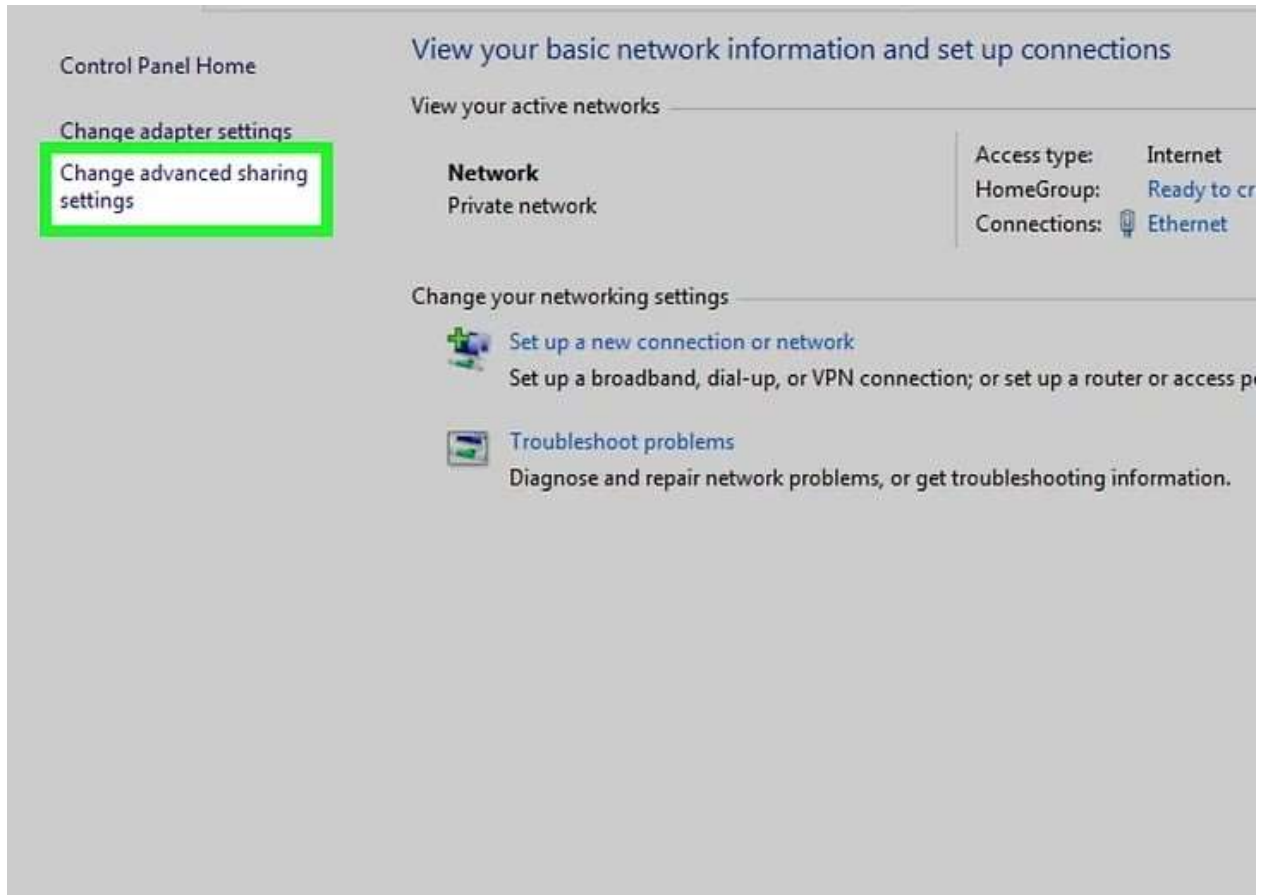
Click the [Network and Sharing Center](#). It's a link toward the bottom of the page.

- You may need to scroll down to see this link. If you still can't find the link after scrolling down, click the **Status** tab in the upper-left corner of the window and look again.



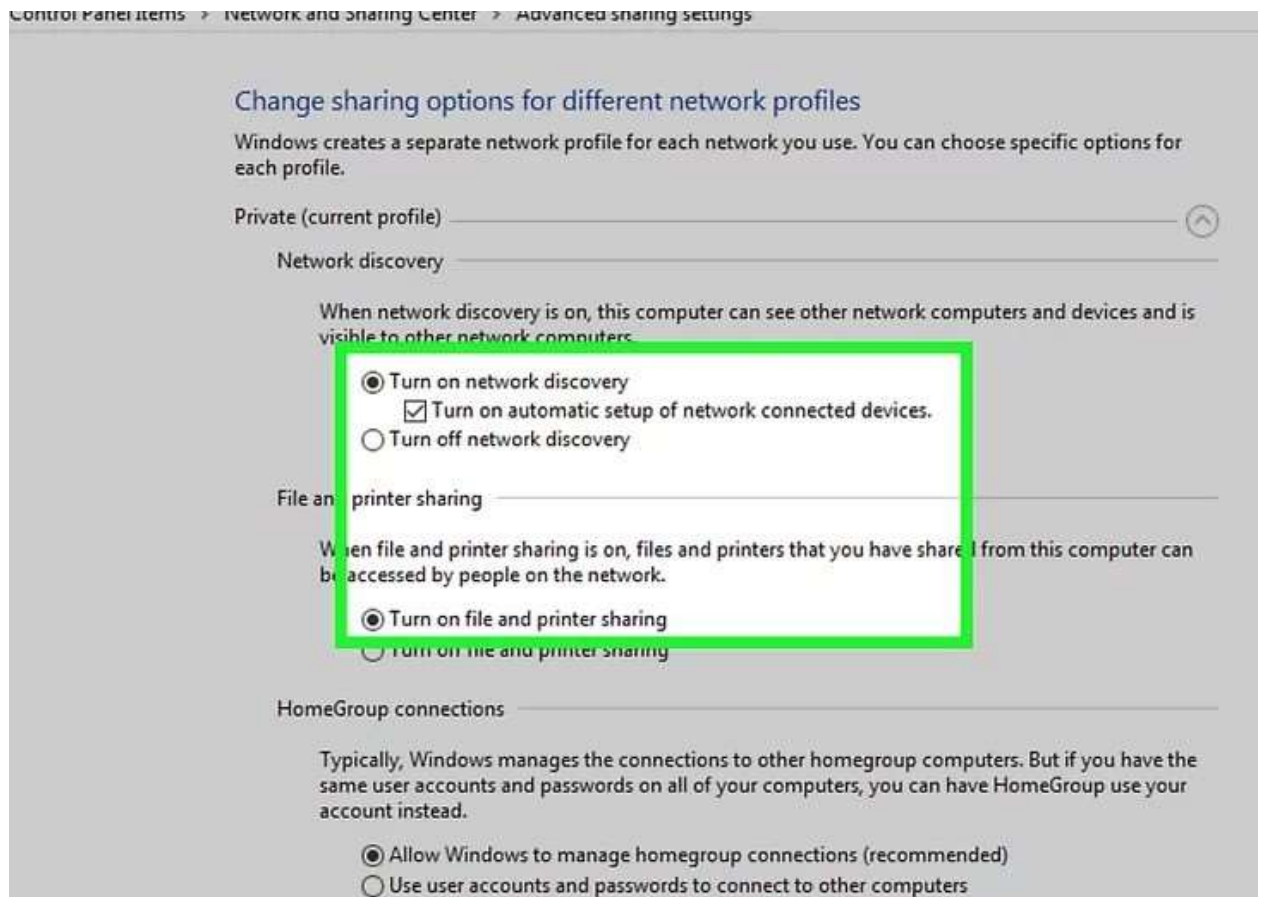
# 6

Click [Change advanced sharing settings](#). This is in the upper-left side of the window. A new window will open.



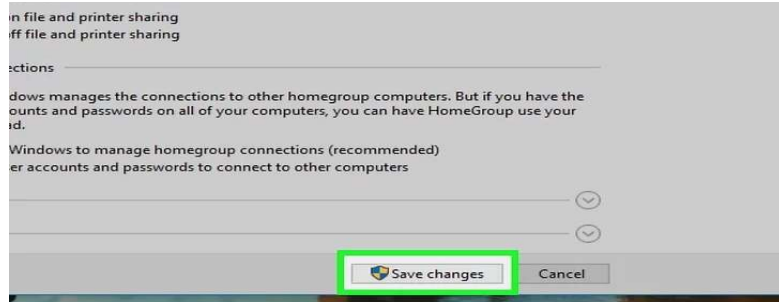
# 7

**Turn on network discovery and file sharing.** Check both the "Turn on network discovery" box and the "Turn on file and printer sharing" box.



# 8

Click **Save changes**. It's at the bottom of the window. Doing so saves your settings.

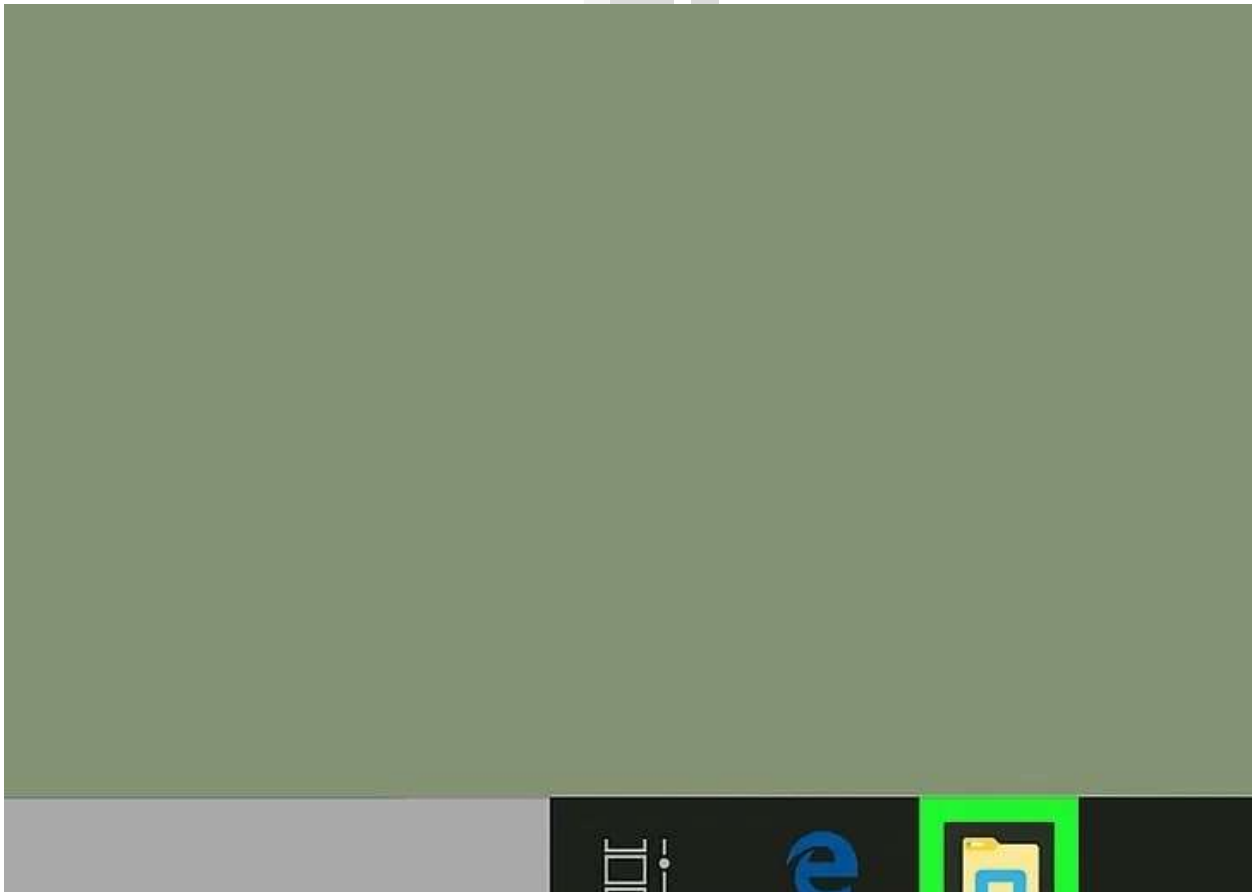


# 9

## Open File Explorer

. Click the File Explorer app icon at the bottom of the screen, or right-click the Start icon and then click **File Explorer** in the resulting pop-up menu.

- You can also press **Win + E** to open the File Explorer.

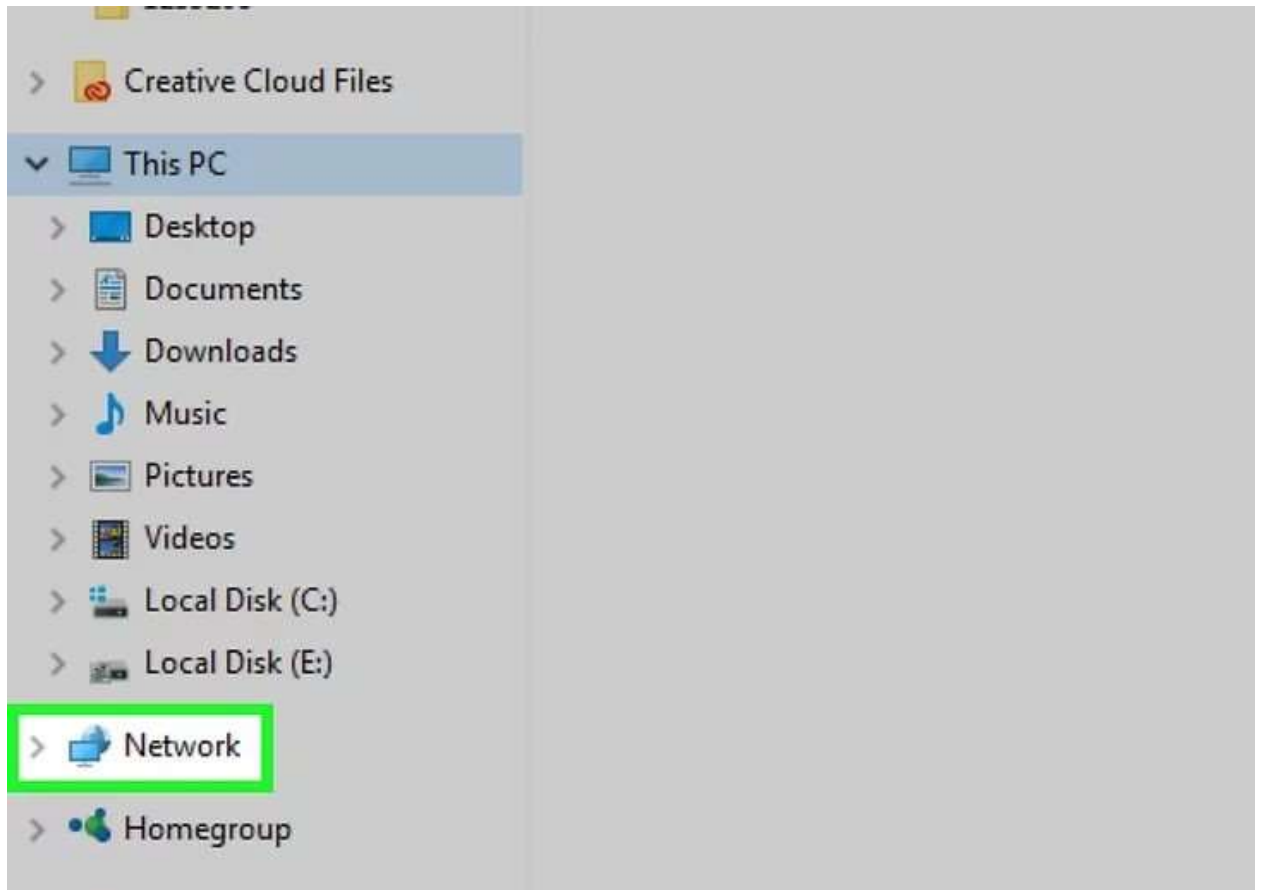




# 10

Click **Network**. It's near the bottom of the sidebar that's on the left of the File Explorer window.

- You may have to scroll down in the File Explorer's left-hand sidebar to see this option.

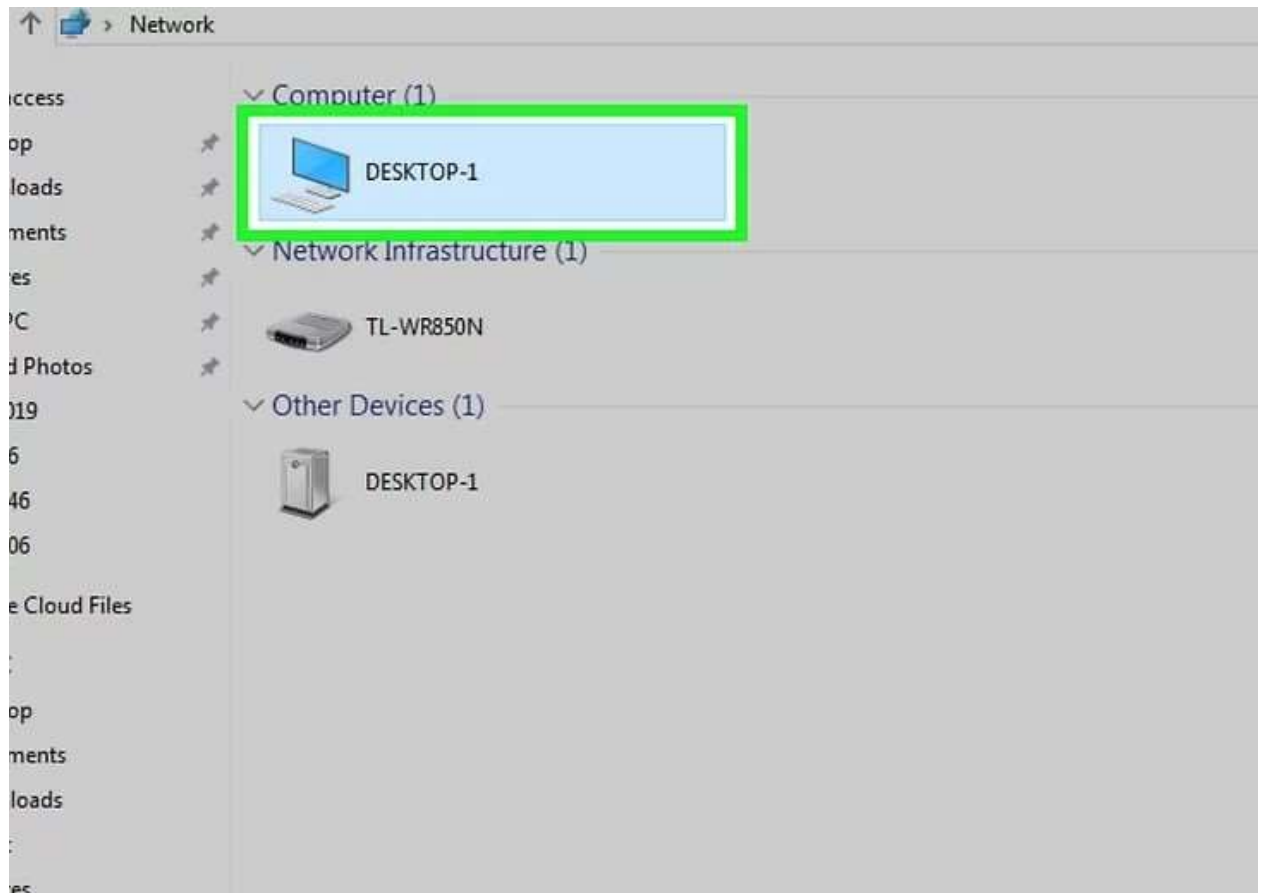


> **Network**

> Homegroup

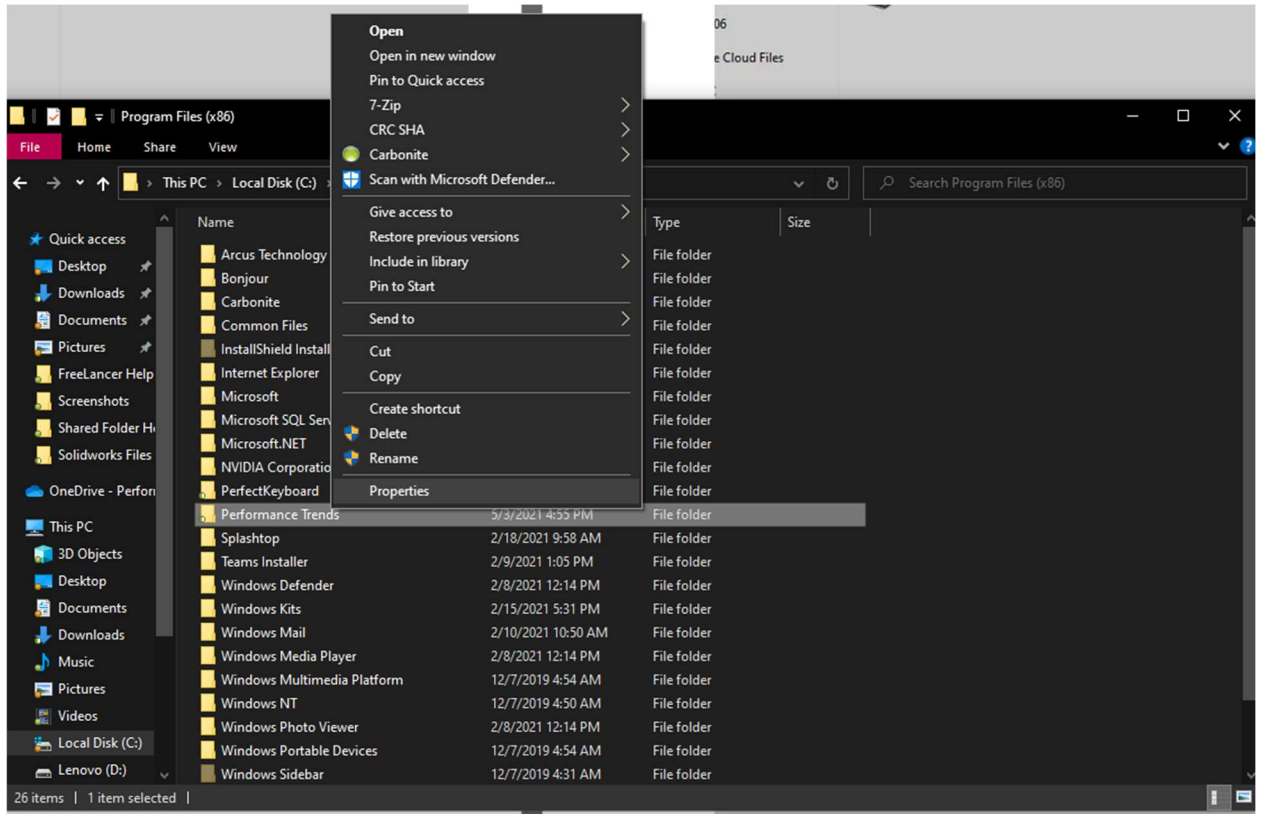
# 11

**Select a computer.** Double-click the name of the computer from which the folder you want to open is being shared.



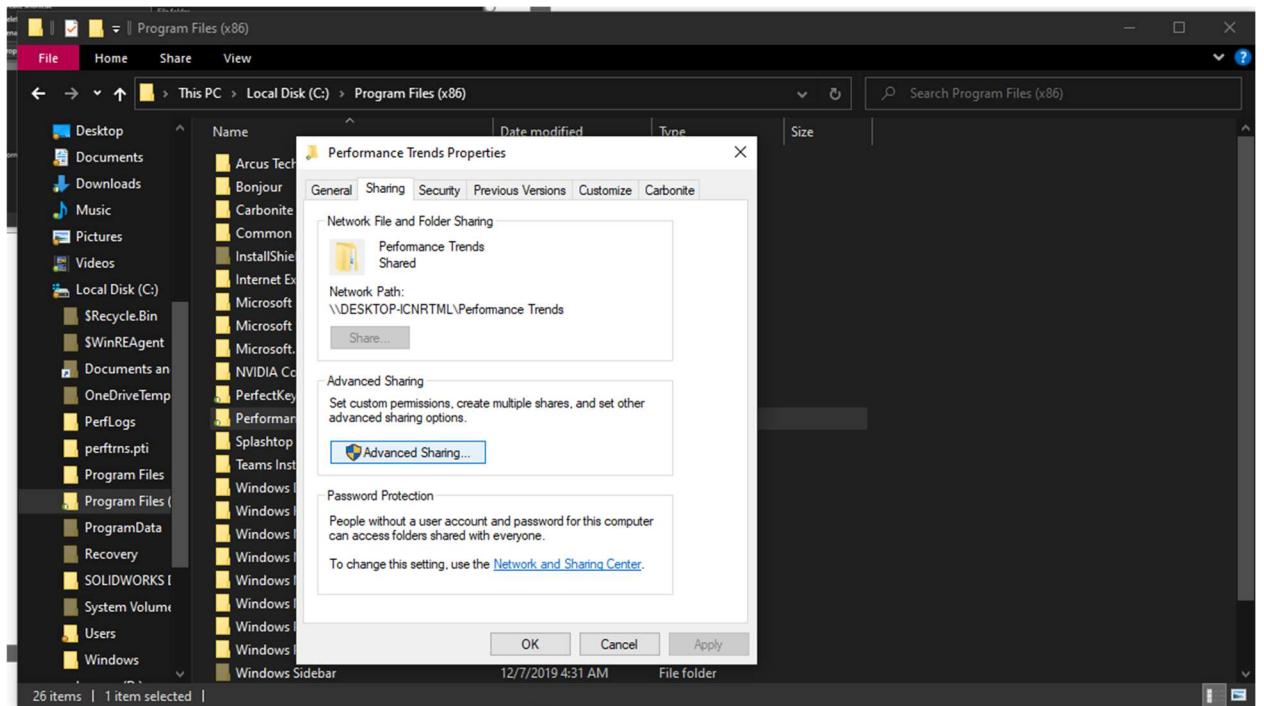
# 12

Creating a shared folder. In order to create or add a shared folder to the network there are a few steps that need to take place. **First** you will need to locate the file you wish to share, and **right click** on this folder and open the **properties** tab for this folder.



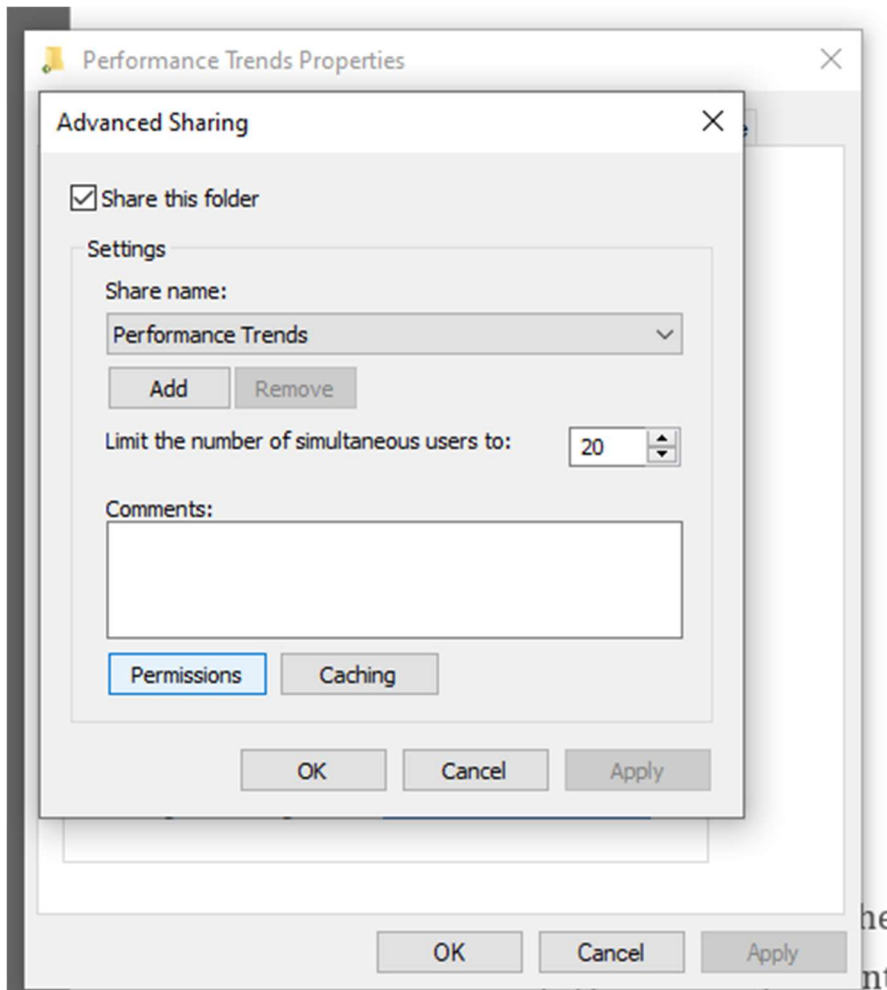
# 13

Once inside of the properties tab, you will need to enter the **sharing tab** and find the **advanced sharing button**.



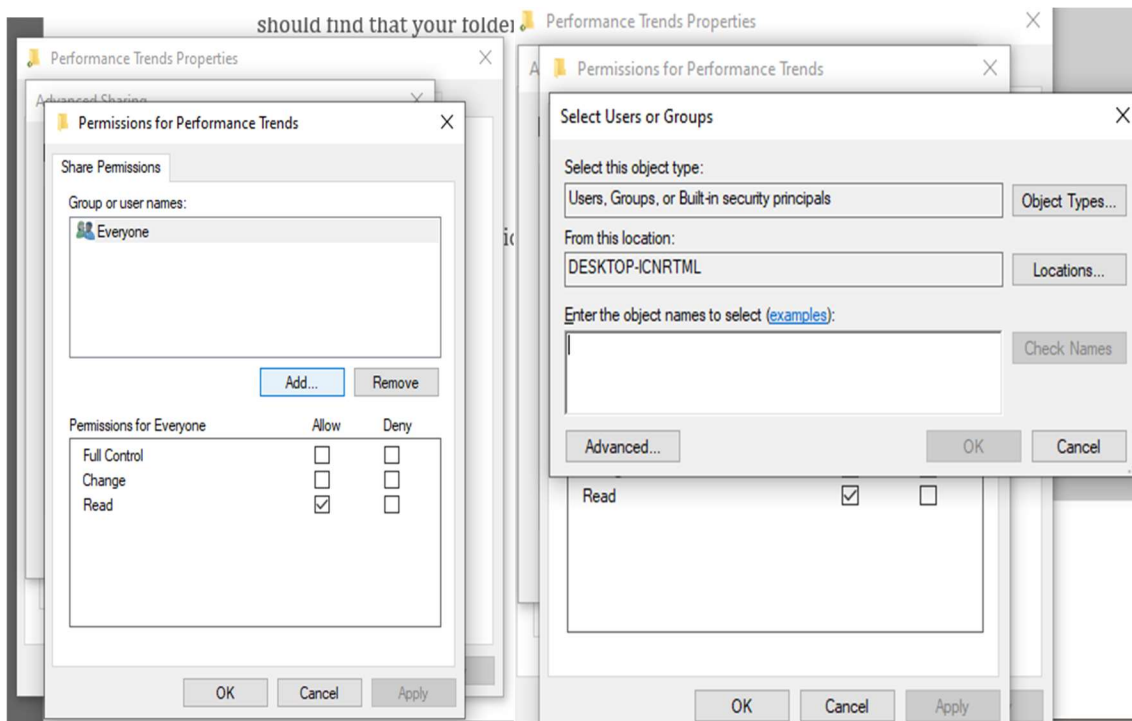
# 14

Click on the box next to the text **share this folder**. Once you have done that click on the **permissions button**.



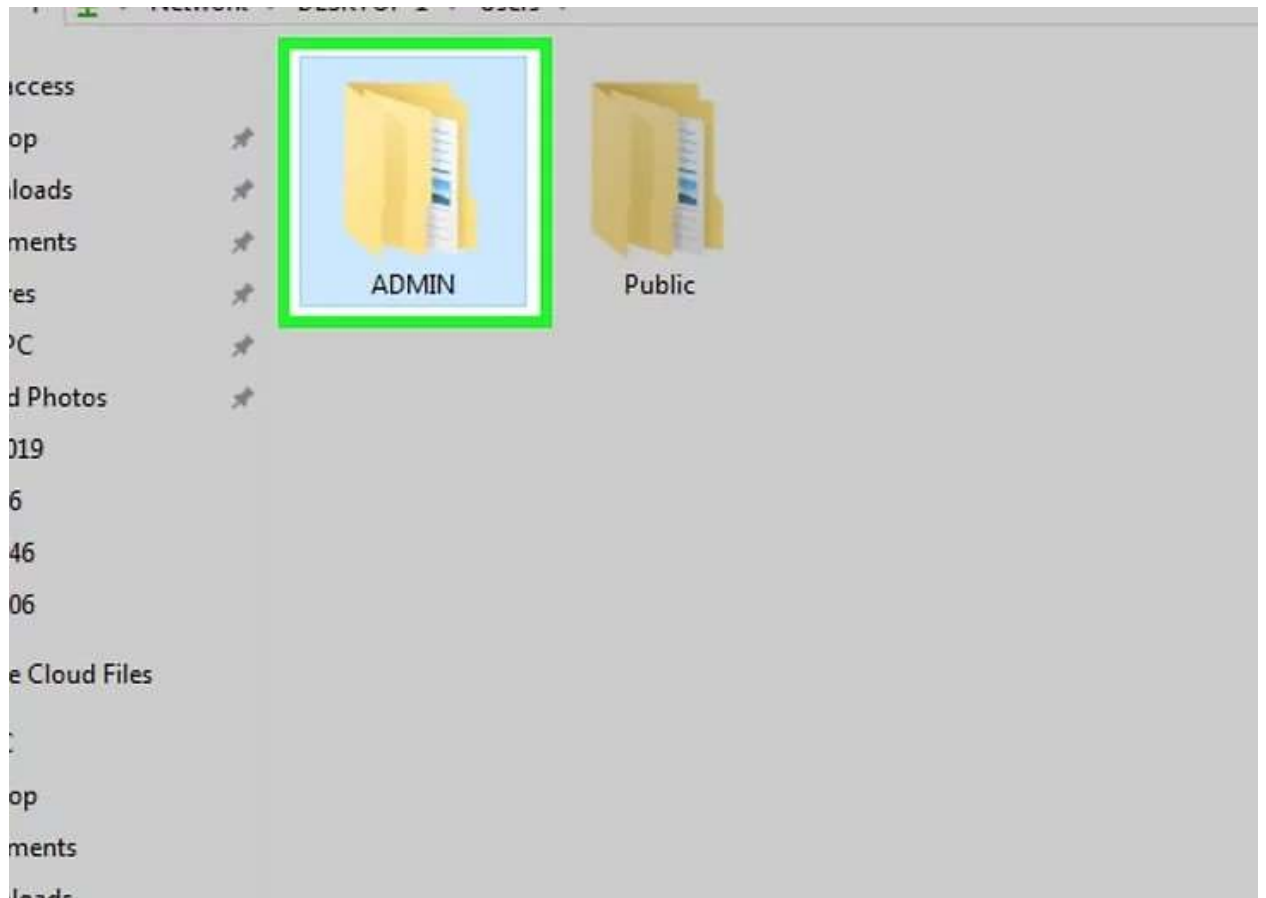
# 15

Find the **add button**. In the box where it says to **enter the objects name to select**, type in **everyone** into this box and click on **OK**. Once you click okay, you should find that your folder is now visible on the network.



# 16

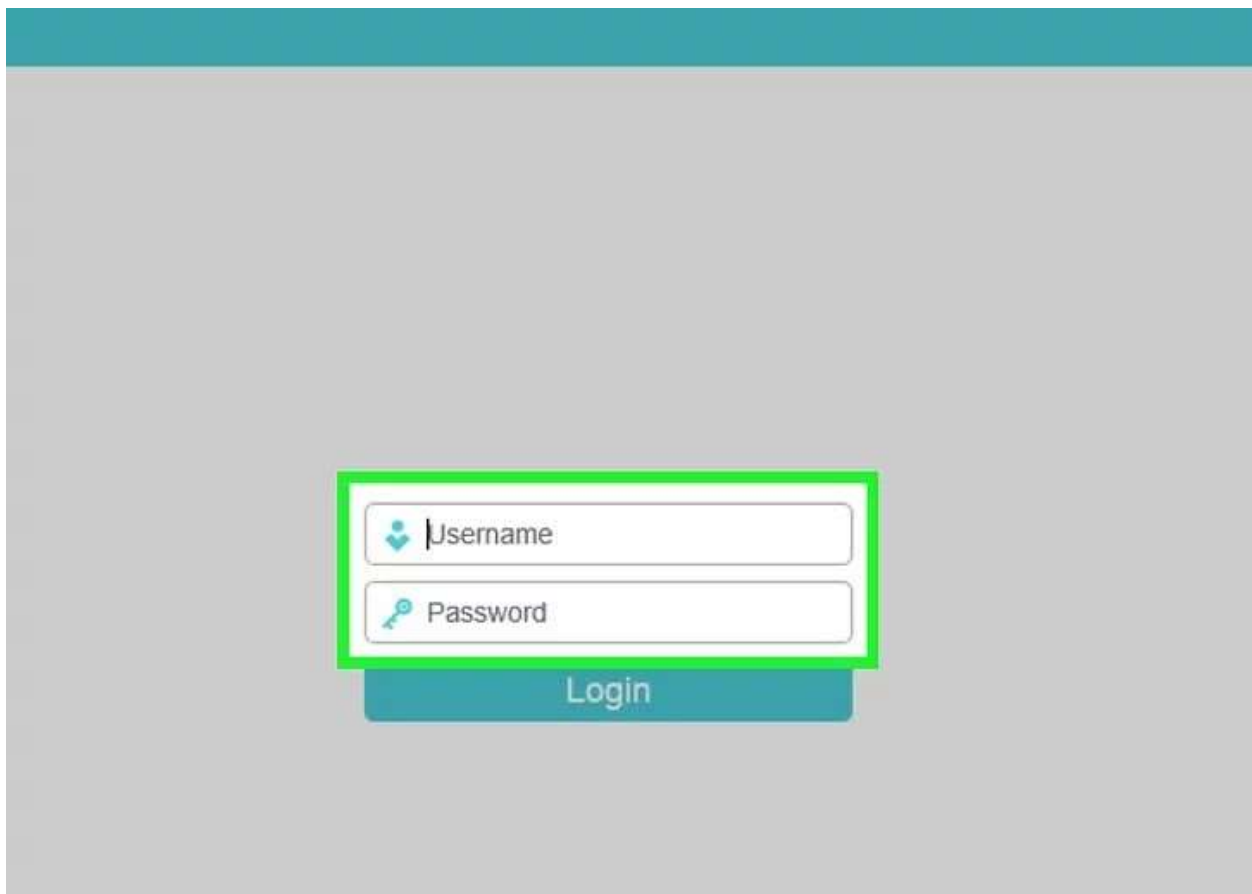
Select a **folder**. Double-click the folder you want to open.



# 17

**Enter a username and password if prompted.** This will usually be the username and password used to log into the computer which is sharing the folder. Doing so correctly will cause the folder to open.

- If the folder isn't protected, double-clicking it will open it immediately.





# 18

If you are unable to get to this point, you may have to ensure that the **File Sharing Support** is turned on, within the Windows Features list. Simply click inside the box to add the check and you will be asked to restart the computer. **You must restart the computer for the settings to take.** Once the computer restarts you should be able to share folders between the two computers.

